

Livable Communities Initiative

The **MISSION** of the Livable Communities Initiative is to address our housing and human dignity crisis by building **housing for all Angelenos** in safe, sustainable communities.



What if...
instead of our Commercial Corridors
looking like this...



Westwood Blvd, before

...they looked like this?



Westwood Blvd, after

Housing

Tree Canopy

Slow & fewer cars

Al fresco

Safe Bike lanes

Access to Transit

This is a Livable Community



Combine:

Gentle Density


Human Scale

Missing Middle

+

Complete Street





We can build this
along our
commercial
corridors...

...and get the
overwhelming support of
Homeowners, Residents &
Businesses...

...but **only** if we address parking & traffic congestion.

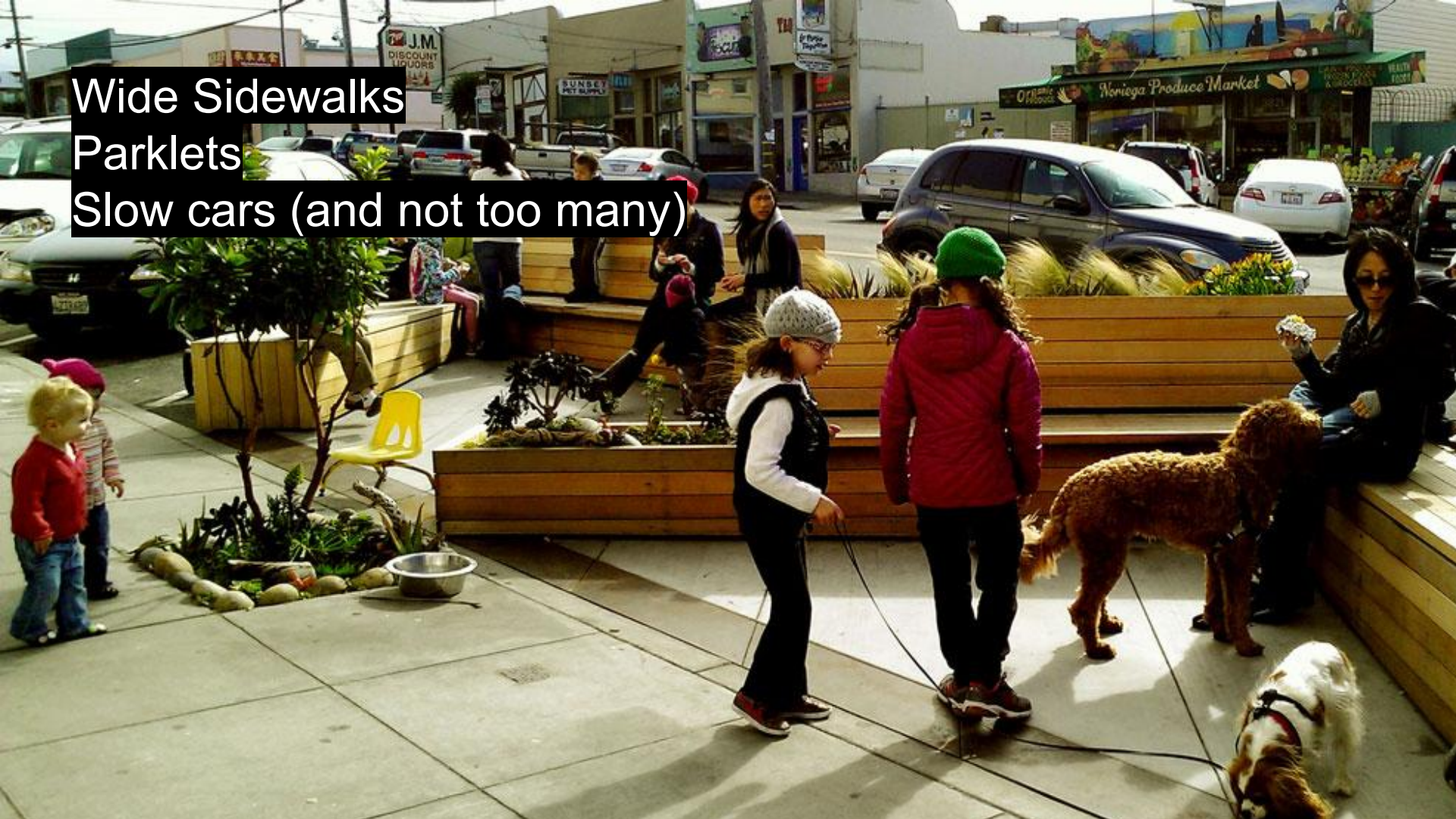
A holistic solution:
Upzoned Complete
Streets



We can transform our streets and communities...
Al Fresco Dining



Wide Sidewalks
Parklets
Slow cars (and not too many)



Tree Canopy
Cafes + Stores

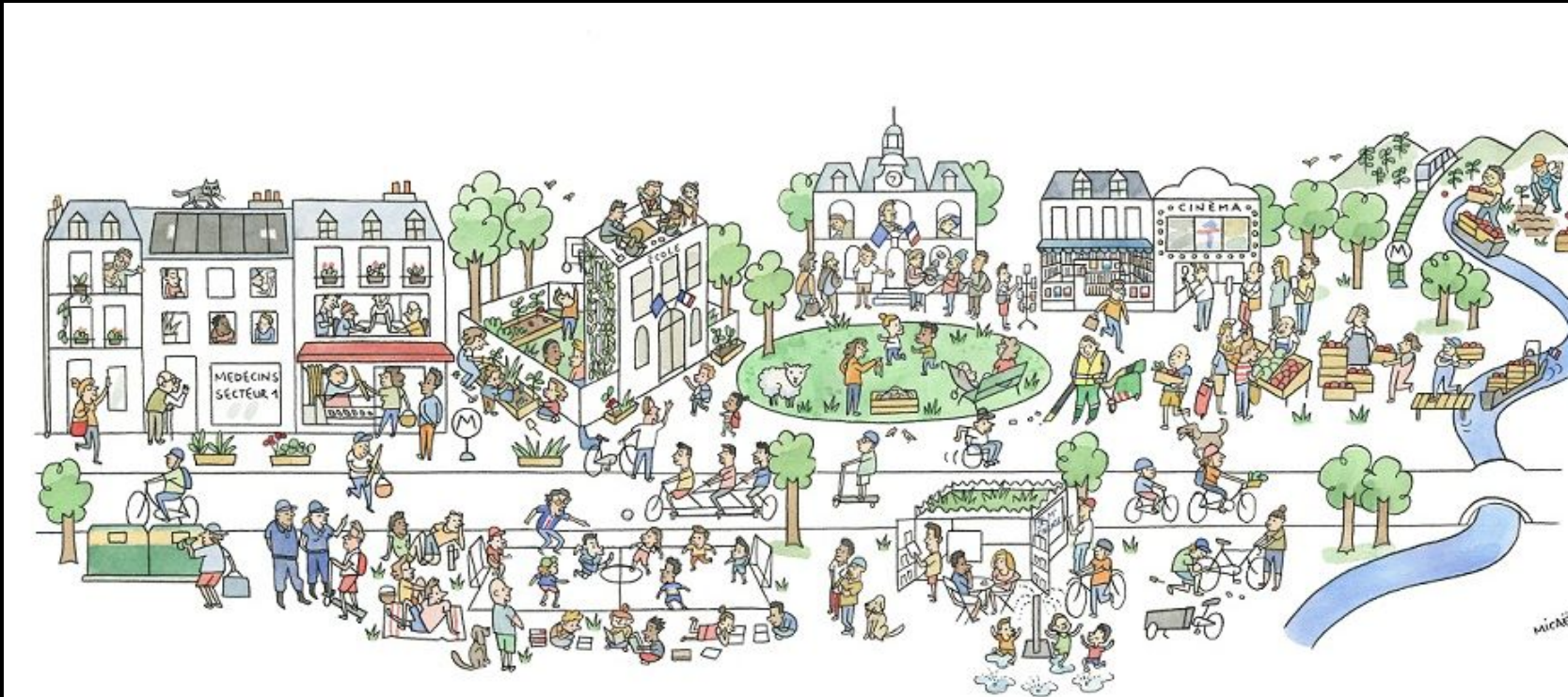
...it's Larchmont Blvd or Abbott Kinney



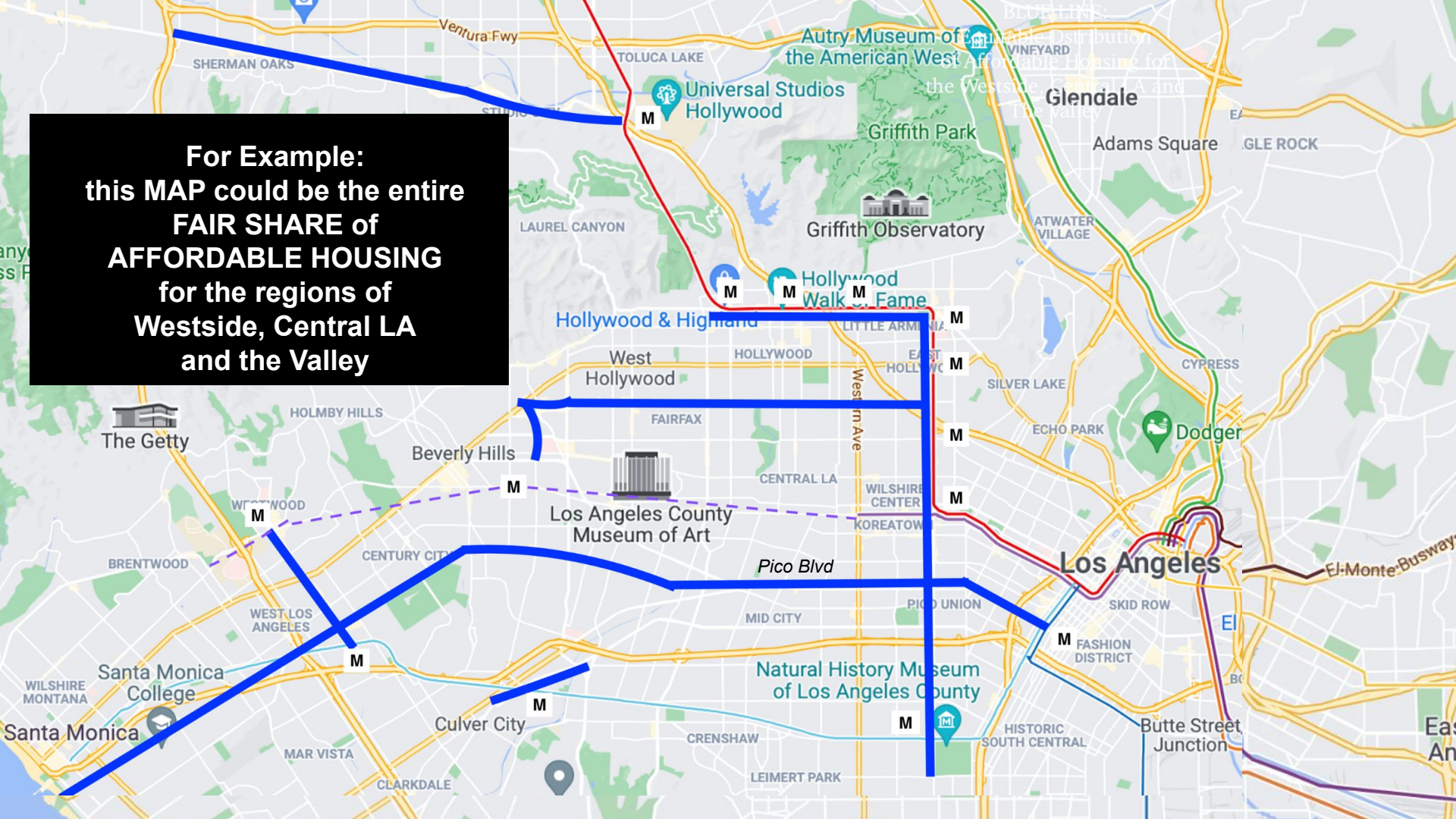
Safe and Easy access to fast + frequent transit



It's called a "15 Minute City"
Walkable, bikeable, near jobs and transit
Convenience, affordability, community.

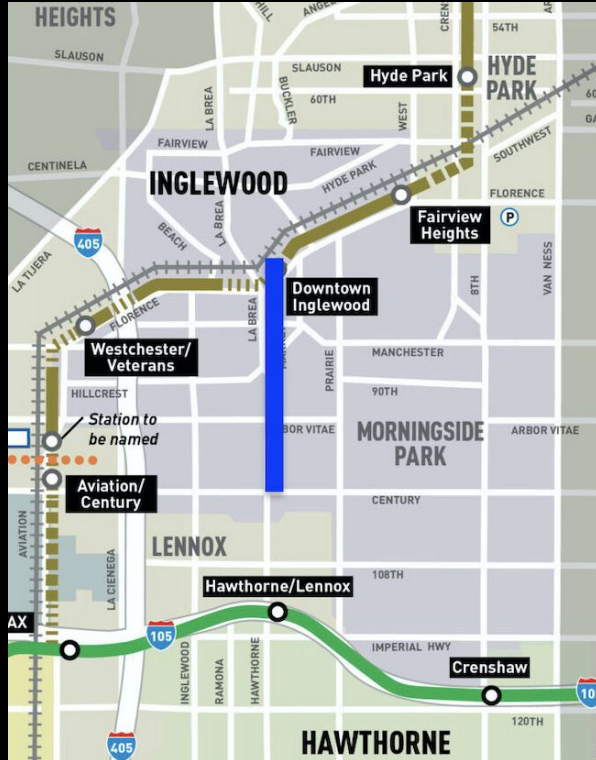


**For Example:
this MAP could be the entire
FAIR SHARE of
AFFORDABLE HOUSING
for the regions of
Westside, Central LA
and the Valley**

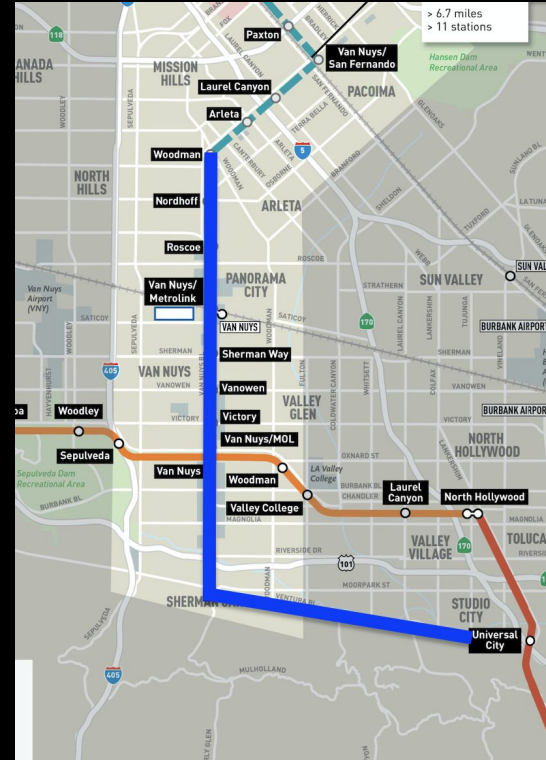


Community Suggestions:

Inglewood:

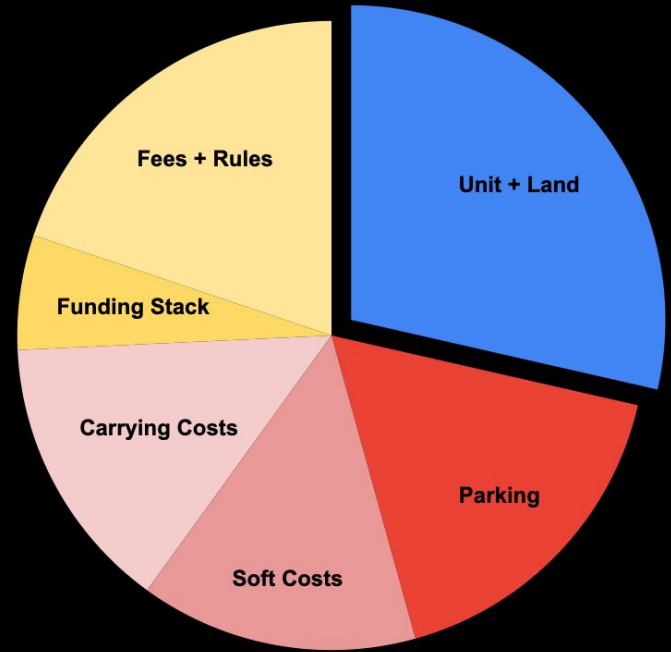


Van Nuys Blvd:



Streamlining:

- No parking minimums
- No delays & red tape
- No fees
- No legal exposure

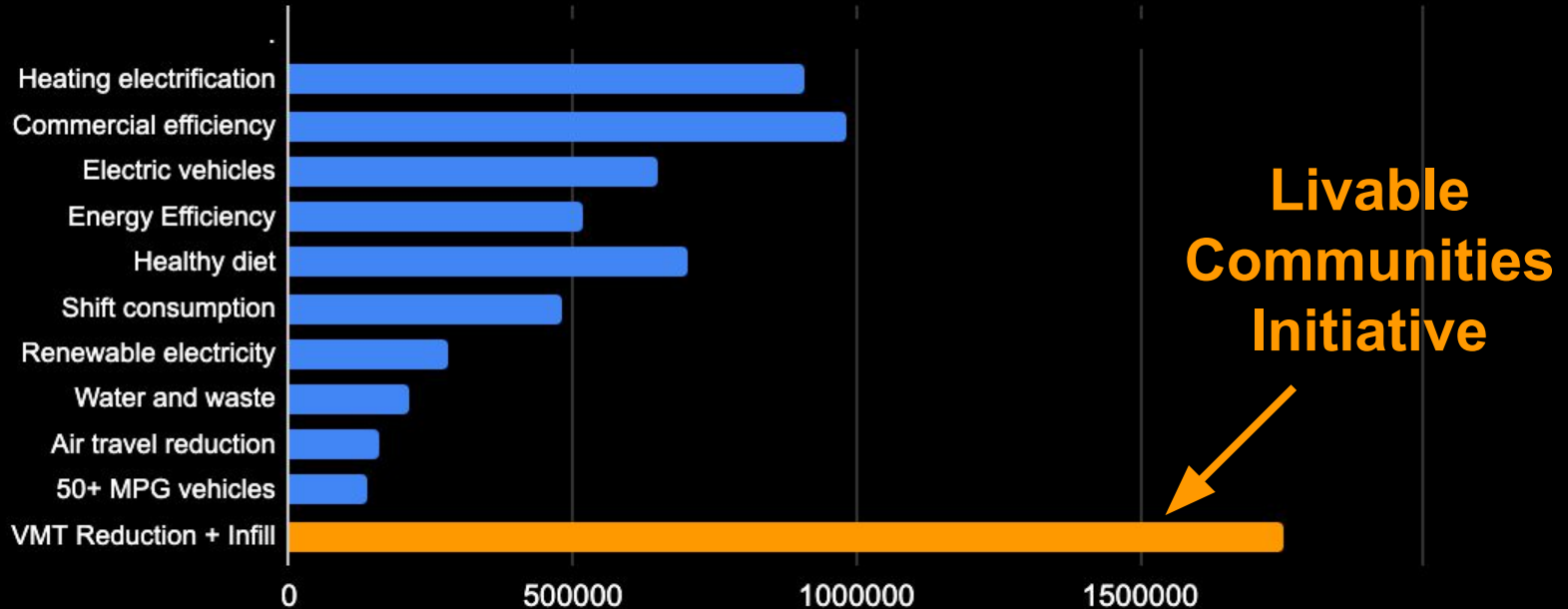


The cost to build one unit in LA is over \$500,000 and takes 4-7 years. Units can get built for \$100k and take 7 months.

**How Livable Communities align
with our shared values**

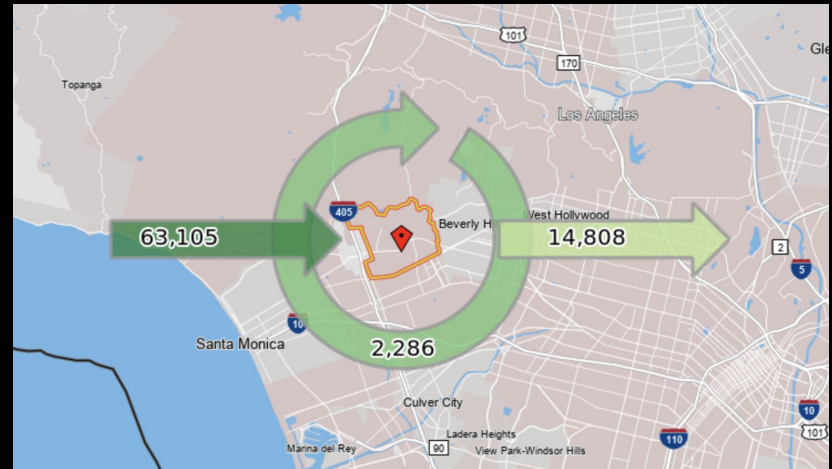
The impact on climate...

Top Local Climate Policies for Los Angeles GHG Reduction Potential - UC Berkeley



The effects of a Housing Shortage on a community:

- 63,000 workers commute into Westwood every day
- 20% of UCLA students commute to school
- An estimated 1/14 students will sleep in their car because there are not enough dorms



The LCI increases the impact of funding for affordable housing so public dollars go twice as far:

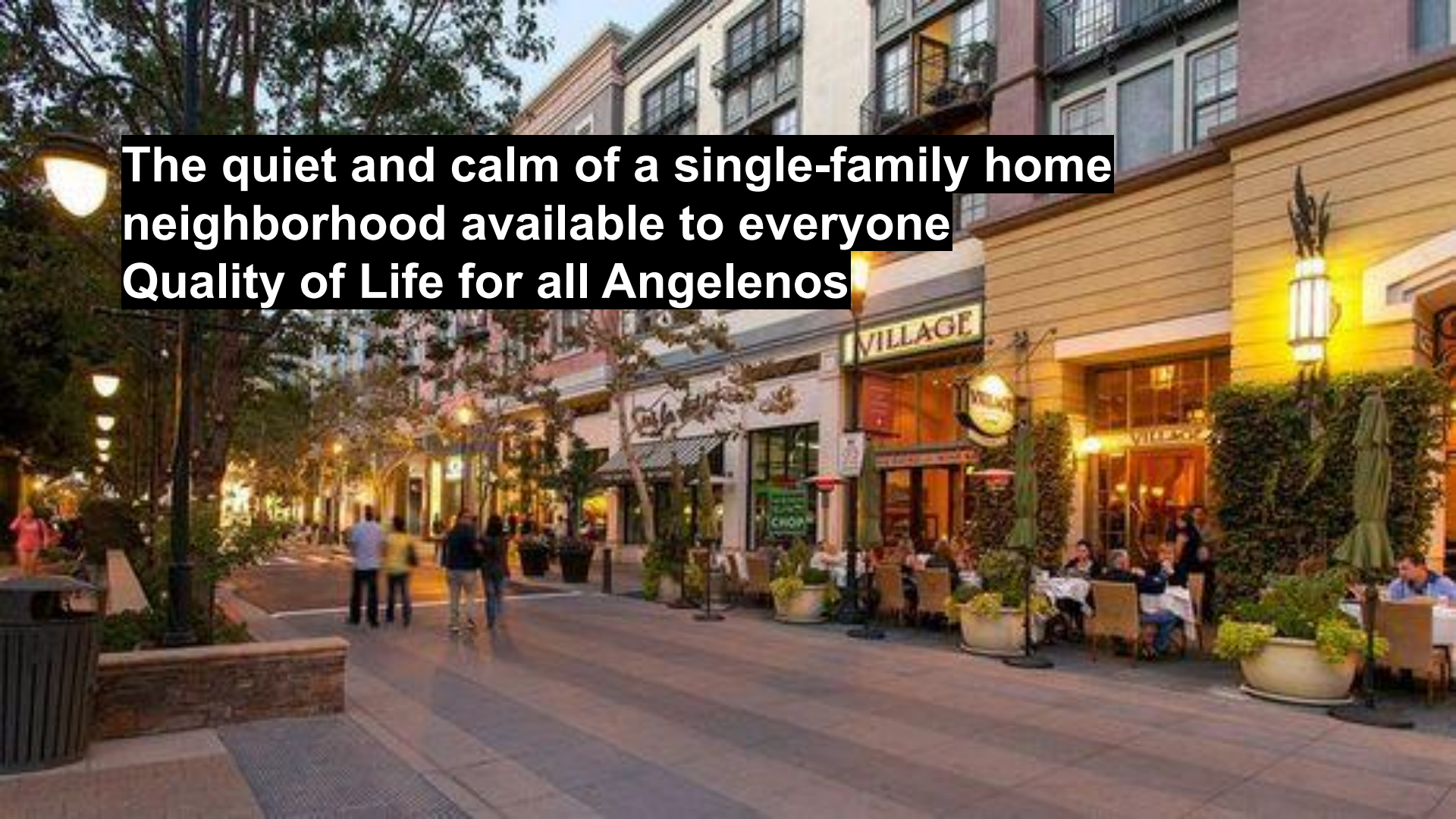
- No need for parking
- Small family-owned builders can compete
- End the Monopoly that drives up costs
- Innovation
- Small lots pencil out



Positive Impacts:

- Reverses Displacement and anti-gentrification
- Brings down rents across region by ending scarcity
- Decreases rent burdens which reduces homelessness
- Benefits local residents with a beautiful walkable street

**The quiet and calm of a single-family home
neighborhood available to everyone
Quality of Life for all Angelenos**



**Models:
Attainable Homeownership
Community Land Trusts
Co-Living**



Please Join Us at

LivableCommunitiesInitiative.com